

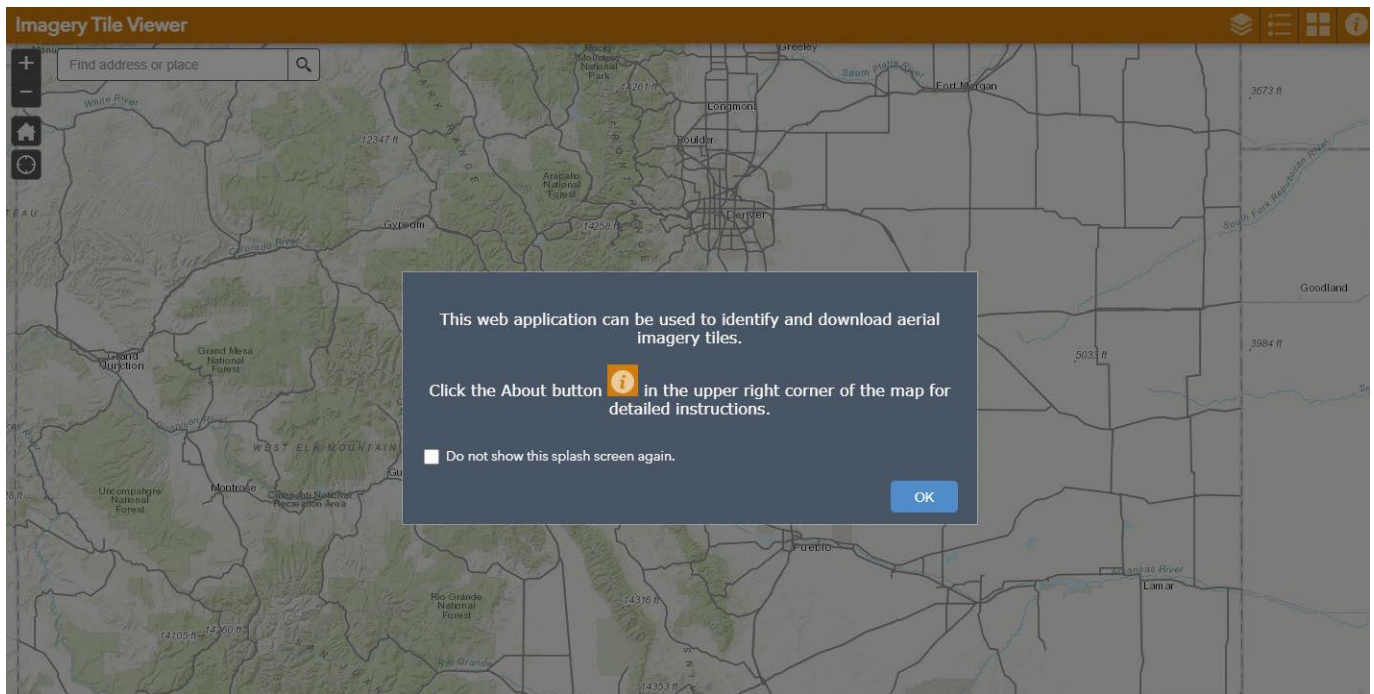
Workflow MS 12- Accessing Aerial Imagery Files

This document guides you through the process of locating and downloading aerial imagery stored on CDOT servers.

Please Note: This workflow has been updated for use with ORD, however, we have included steps for MicroStation SS4/SS10 as well, to cover the minor differences.

In order to download the correct image files for a project, the names of the image tiles must first be determined. Both **Denver Area (DRAPP)** and **Statewide (NAIP)** image tiles can be identified using the Imagery Tile Viewer web application.

1. You will need to create an account in **GeoHub** in order to access the Imagery Tile Viewer web application (as well as to access all future GeoHub applications). Please follow the instructions [HERE](#) to create your account (must be on the CDOT network or VPN)
2. Once your **GeoHub** account has been created, you can open the **Imagery Tile Viewer** [HERE](#)
3. The **Imagery Tile Viewer** will open as shown below:

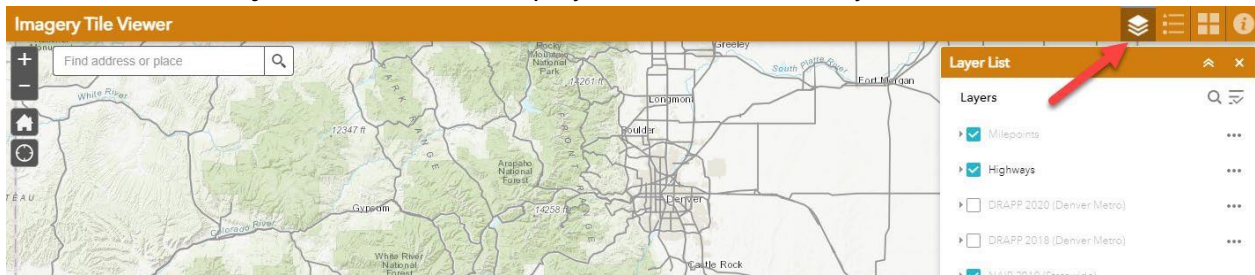


4. **Click the OK** button to close the welcome window.

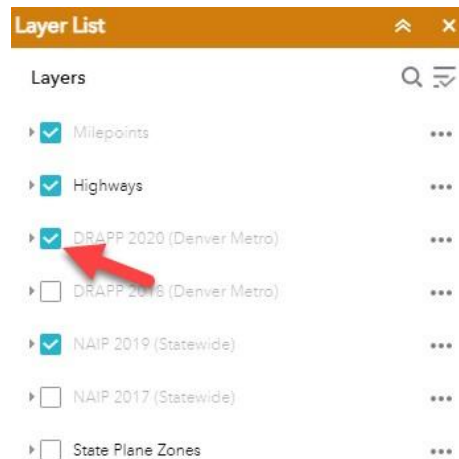
- The navigation tools in the upper left corner of the map area allow you to zoom in/out. The **Home** button will zoom you to the statewide extent. Scrolling the mouse wheel will also allow you to zoom in and out. Click and hold the left mouse button down to pan around the map.



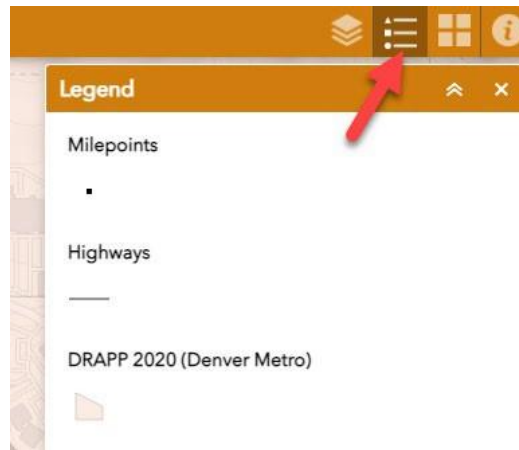
- Click the **Layers** List button to display the available data layers.



- To turn on a layer in the map area, check the box to the left of the desired layer (i.e. **DRAPP 2020**). If a layer is grayed out, you need to zoom in to be able to see that layer.

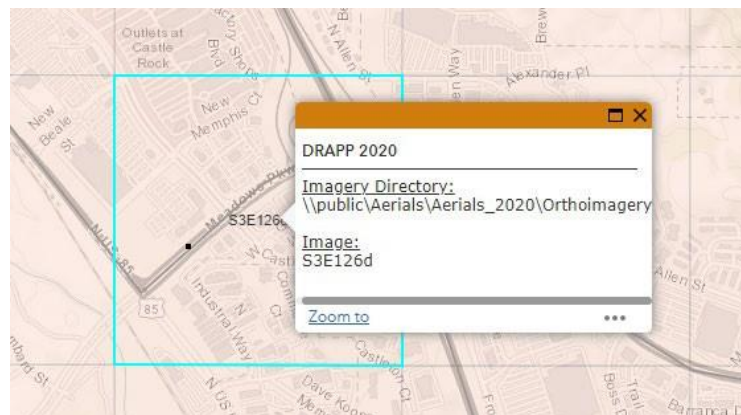


8. **Click** the **Legend** button to see the symbology for the layers that are enabled (checked on) in the Layers list.

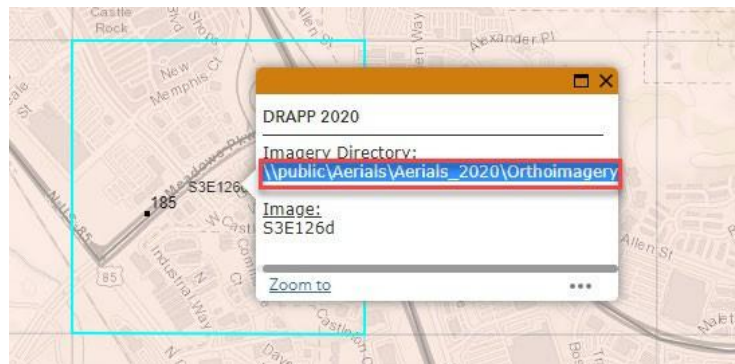


9. In the map area, **Left Click** on a tile grid to select the tile (it will highlight) in order to view its attributes:
- Type of imagery (i.e. DRAPP 2014 TIF)
 - Imagery Directory for that imagery type (i.e. \\public\Aerials\Aerials_2020\Orthoimagery)
 - Imagery Tile name (i.e. N1W133)

Note: Other features such as Highways can also be selected to view their attributes.



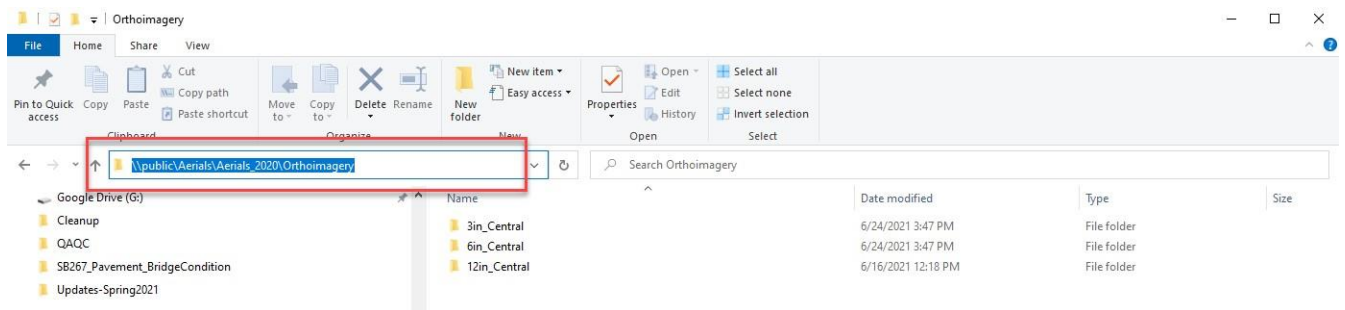
10. Select the imagery directory location in the text box by **quickly clicking three times** on it until the **entire** directory is highlighted. Then **Right Click** and choose **Copy** (or hit **Ctrl-C** on your keyboard).



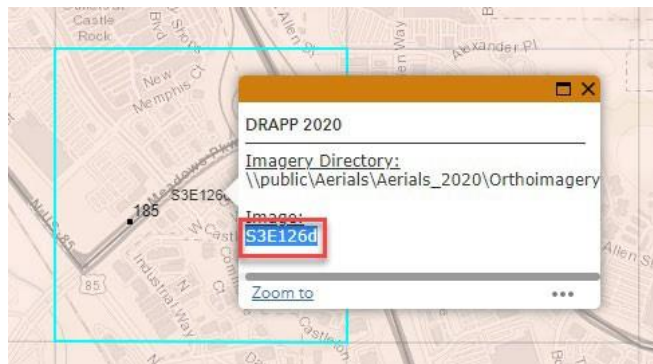
11. Open a **windows file explorer** window by clicking the folder icon in your system tray.



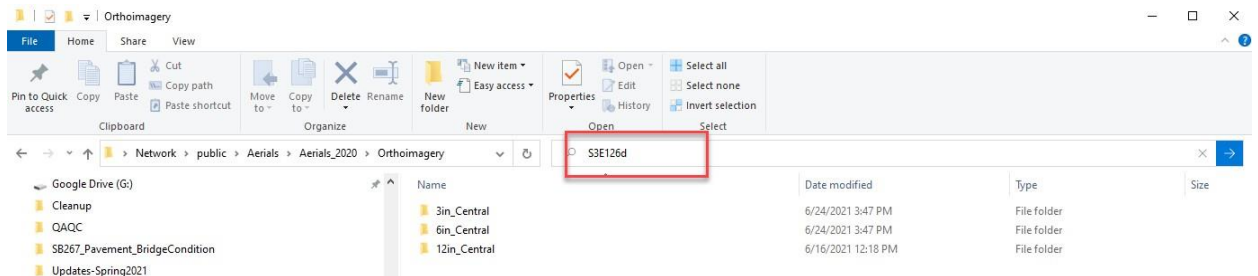
12. **Paste** the copied text into the **address bar** by **Right Clicking** in the address bar and then choosing **Paste** (or **Ctrl-V** on your keyboard). Then hit the **Enter** key and you should see the available sub folders.



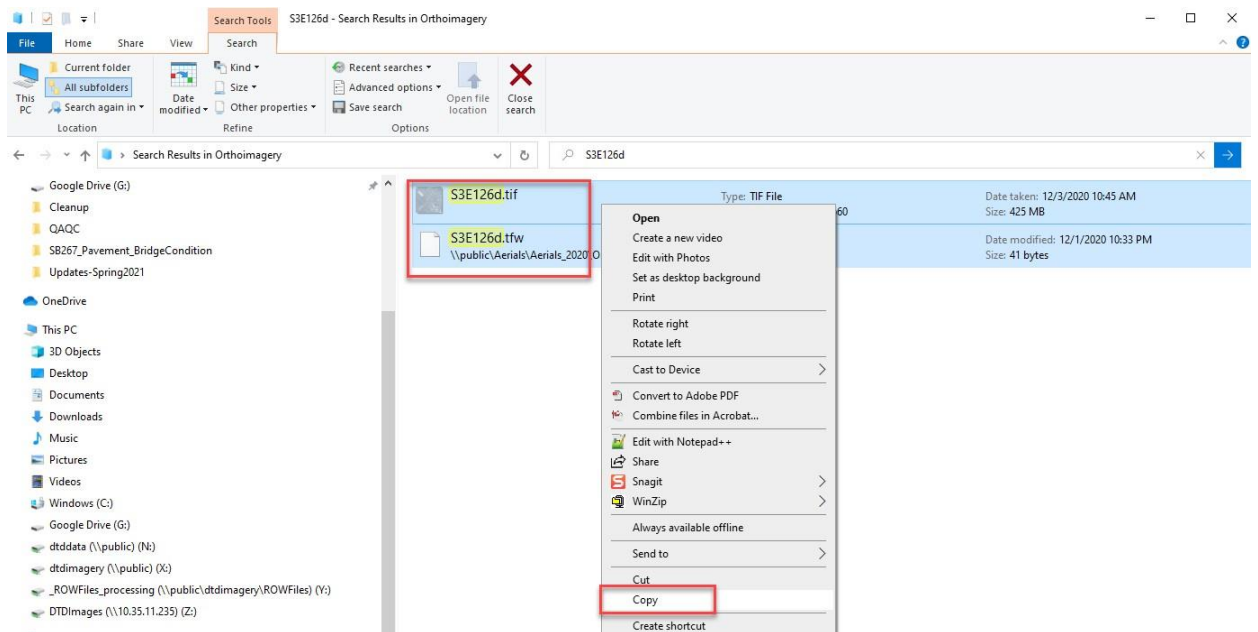
- Back in the **Imagery Tile Viewer**, highlight the **entire** image tile name in the text box by **clicking twice** on it until the **entire name** is highlighted. Then **Right Click** and **Copy** (or hit **Ctrl-C** on your keyboard).



- In the same windows file explorer pane from earlier steps, **paste** the copied text into the **search bar**. Hit Enter to initiate the search for the image.



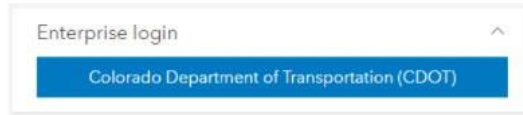
- Any files matching the search should display in the window as shown below. **Select all** found files and **Right Click** and **Copy** (or hit **Ctrl-C** on your keyboard).



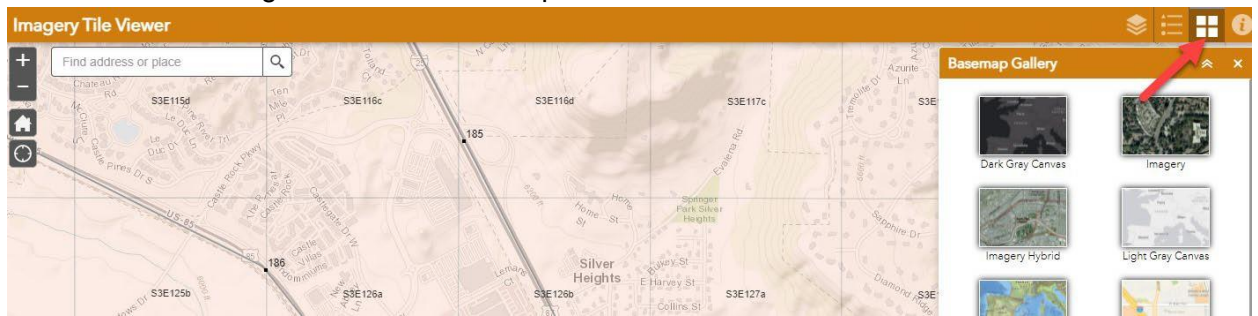
16. **Open** a new *windows explorer pane* and navigate to the desired location on your local machine, then **Right Click** in the *windows explorer pane* and choose **Paste** (or **Ctrl-V** on your keyboard).
17. Repeat above steps for any other files needed.

Tips/Tricks:

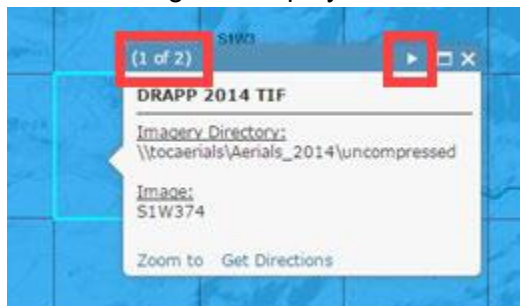
- Occasionally when you access the *Imagery Tile Viewer*, you may be prompted to sign in again. Please click the blue **Enterprise Login** button, which should sign you in automatically.



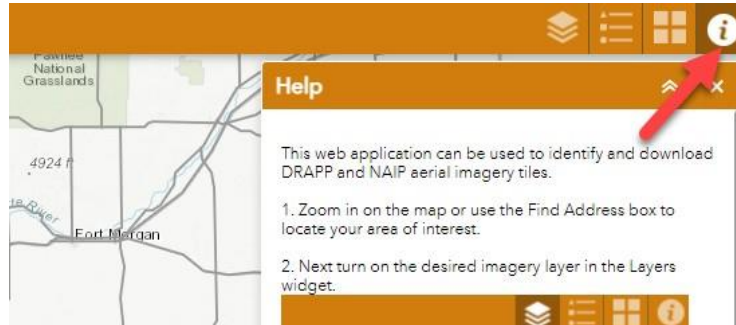
- You can change the base map if desired by clicking the **Basemap Gallery** button and choosing the desired basemap.



- If you have multiple layers turned on and you try to click on a grid to get the image tile attributes, be aware that you might have multiple features selected. If you see 1 of "X" in the upper left corner of the info box, you can click the arrow to the right to display the other selected feature's attributes.



- Some help content is available by clicking the **Help** button.



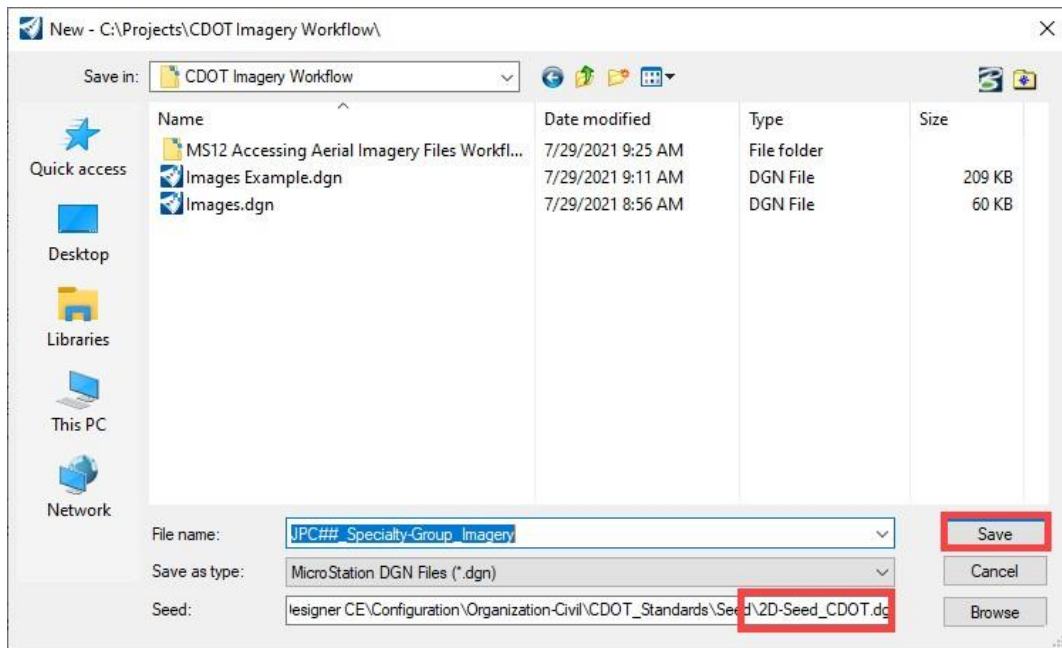
- Be aware that each **NAIP TIFF** will have one of two projections (**UTM 13N NAD83** or **UTM 12N NAD83**) depending on where in the state it is located. This can be determined in the file name (**12** or **13**). The following western Colorado counties are **UTM12N NAD83**: Delta, Dolores, Garfield, La Plata, Mesa, Moffat, Montezuma, Montrose, Ouray, Rio Blanco and San Miguel. The rest are **UTM 13N NAD83**.

Attaching Image Files To A DGN File

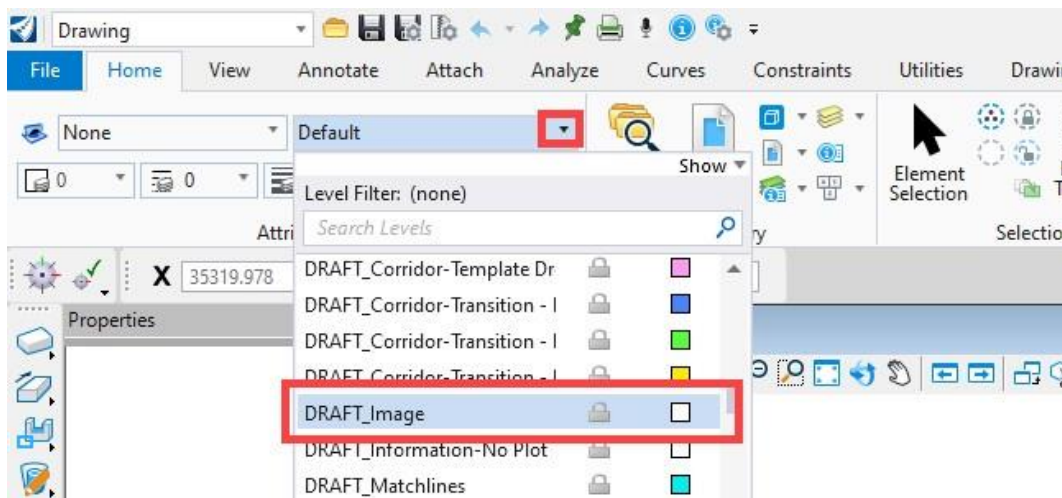
The following steps describe how to attach image files copied from the server to a DGN file and apply the proper geographic coordinate system associated with the images to the DGN file.

Note: Whether you are using MicroStation SS4/SS10 or OpenRoads Designer (ORD) and are working locally or on the ProjectWise Cloud, the following steps are the same, regardless of the application.

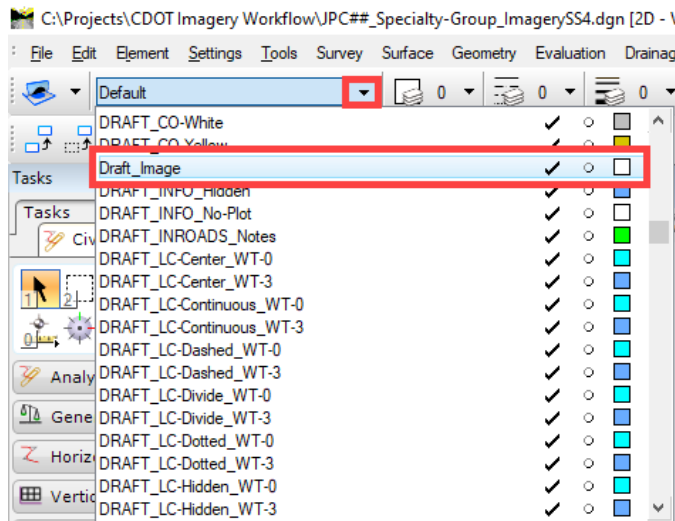
1. Create a new file using the 2D seed file.



2. Set the **Level** for the DGN file to **DRAFT_Image**. The illustration below show how to set the level in ORD. Be sure the **workflow** is set to **Drawing** and use the **Home** tab.



The illustration below shows how to set the level in the MicroStation SS series.



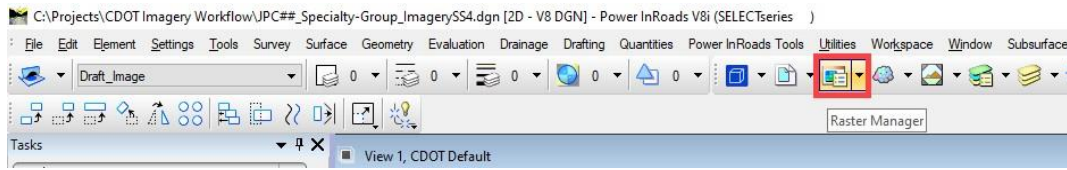
3. Once you have set the level to **DRAFT_Image**, open the **Raster Manager** as shown below.

Important Note: If you are working from **ProjectWise**, for images that have **Sister Files**, you must check out the sister file prior to proceeding with the following steps.

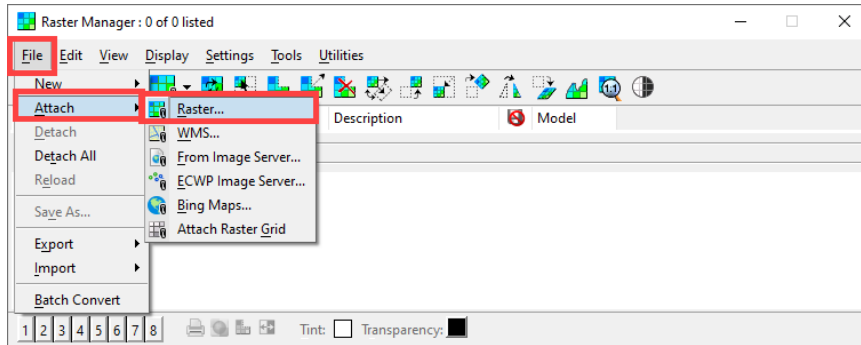
For ORD, From the **Drawing workflow > Home tab > Primary section > Attach Tools > Raster Manager:**



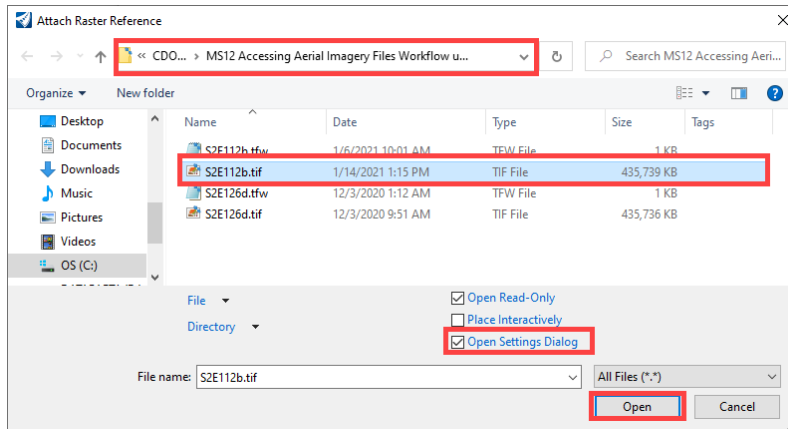
For the MicroStation SS series:



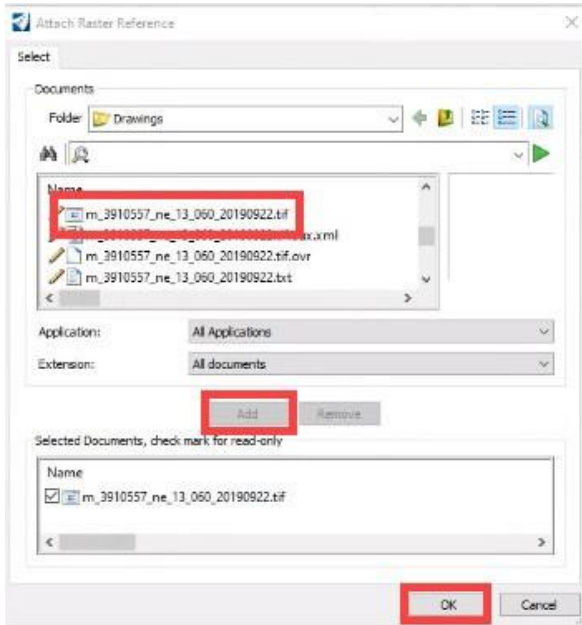
4. In the **Raster Manager** dialog box, Select **File > Attach > Raster**.



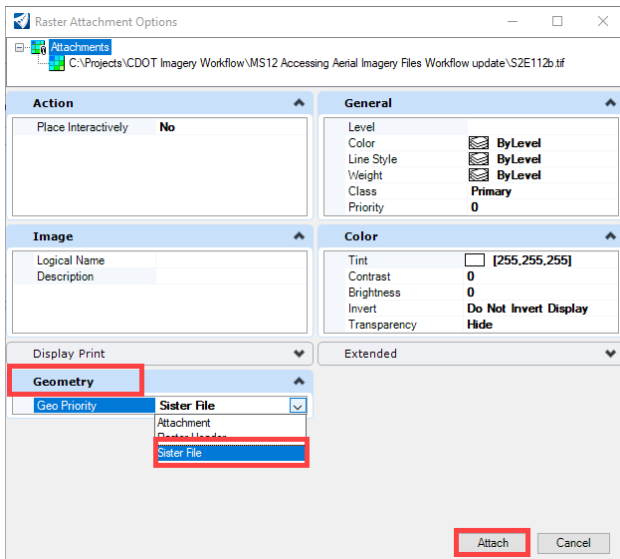
5. In the **Attach Raster Reference** dialog box, navigate to the folder containing the images. Select only the *.tif image file, make sure **Open Settings Dialog** is toggled on, then click the **Open** Button.



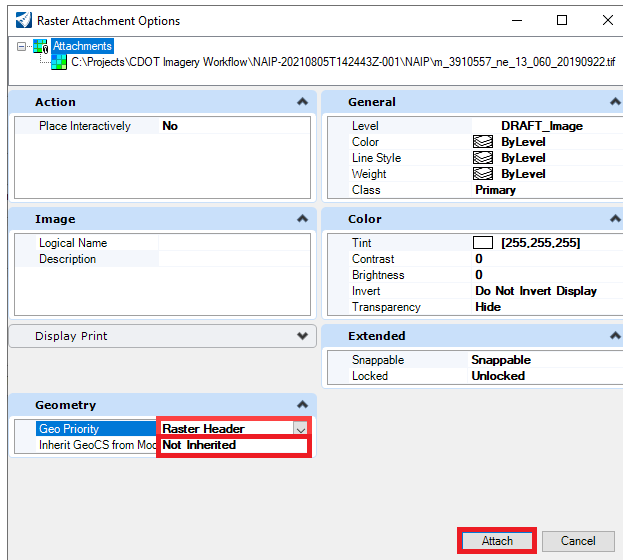
Note: If you are working in ProjectWise the **Attach Raster Reference** dialog box looks the image below. **Highlight** the desired file, **Left Click** the **Add** button, then, **Left Click** the **OK** button.



6. This displays the **Raster Attachment Options** dialog box. For **DRAPP** images in the **Geometry** tab, select **Sister File**.



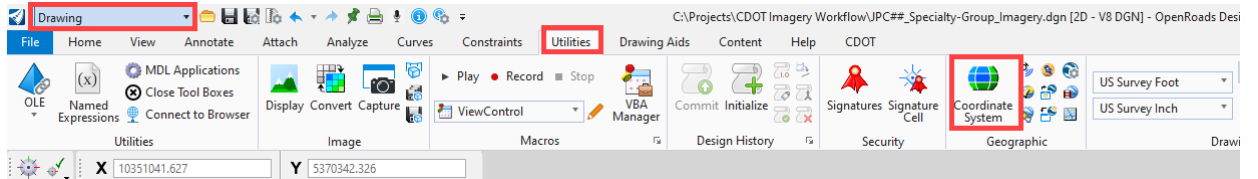
For **NAIP** images, select **Raster Header** for the **GeoPriority**. Set the **Inherit GeoCS from Model** to **Not Inherited**.



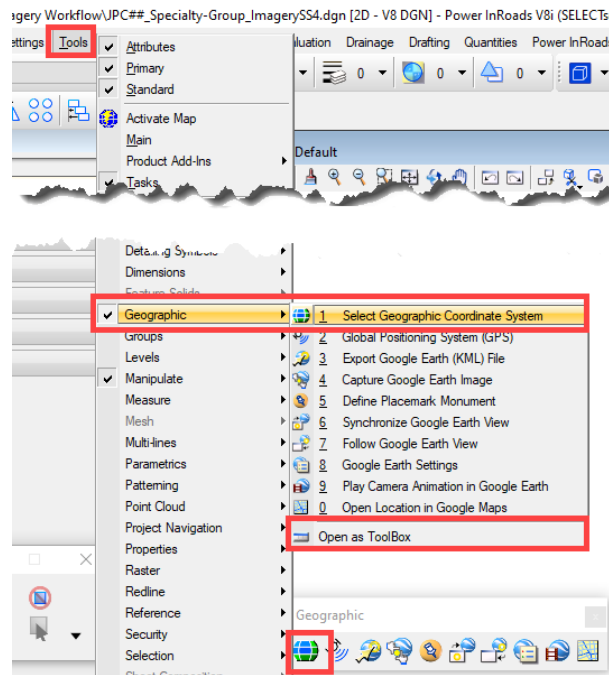
7. Repeat steps 4 through 6 for all images to be attached.

The next steps are used to assign the imagery’s geographic coordinate system to the DGN file.

8. From the **Drawing** workflow > **Utilities** tab > **Geographic** section, select **Geographic System** tool.

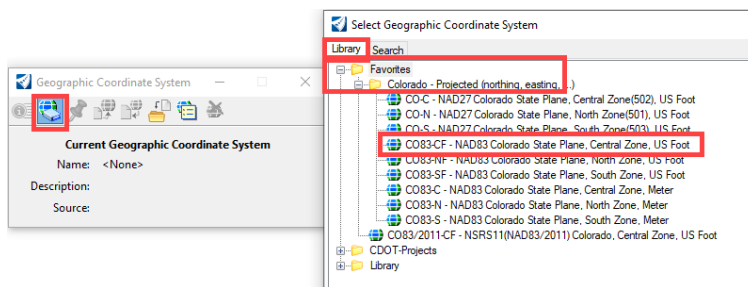


The same tool is found in the MicroStation SS series as shown below:



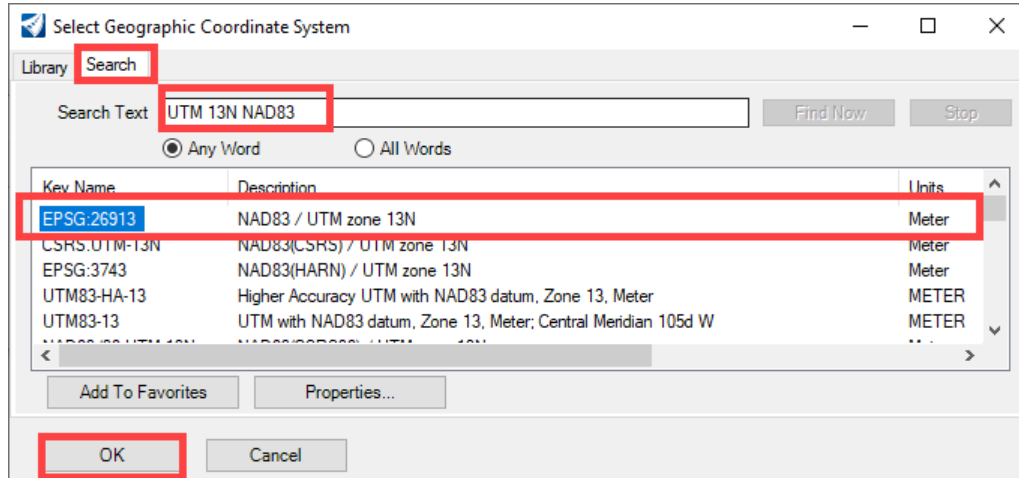
Note: The following steps apply to both ORD and the MicroStation SS series.

9. In the **Geographic Coordinate System** tool settings box, select the **From Library** icon.
10. In the **Select Geographic Coordinate System** dialog box, expand **Favorites** and **Colorado Projected**. Select the appropriate coordinate system for your image file. In this example, the image is in the Colorado Central Zone, so CO83-CF is used as shown below:



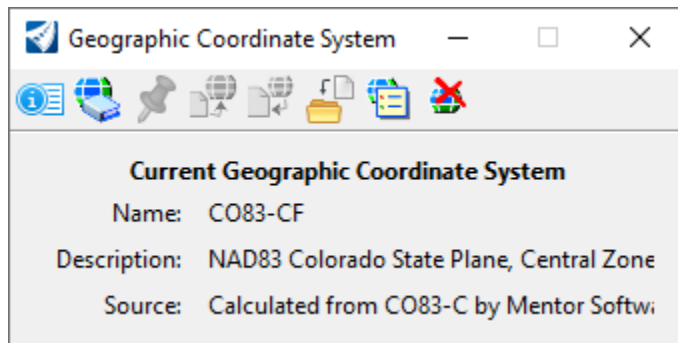
NAIP TIFF will have one of two projections (**UTM 13N NAD83** or **UTM 12N NAD83**) depending on where in the state it is located. This can be determined in the file name (**12** or **13**). The following western Colorado counties are **UTM12N NAD83**: Delta, Dolores, Garfield, La Plata, Mesa, Moffat, Montezuma, Montrose, Ouray, Rio Blanco and San Miguel. The rest are **UTM 13N NAD83**.

These can be found using the search as shown below:



Note: The coordinate systems for both the DRAPP and NAIP images can be found in both the **Colorado - Projected** and the **DRAPP & NAIP – Coordinate Systems for CDOT Imagery** folders.

Once the coordinate system file has been assigned, it is shown in the **Geographic Coordinate System** tool settings box.



11.

The new image design file is now ready to be used with Project Plan files by referencing it using the Geographic Reprojection option so that it aligns with the Project Specific Coordinate System set by the Survey Team in the survey file deliverable for this project. More details on reprojection are explained in workflow **MS 24 Assigning Project Coordinate System**.